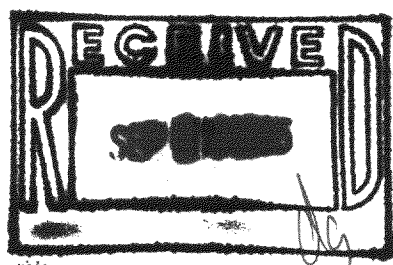
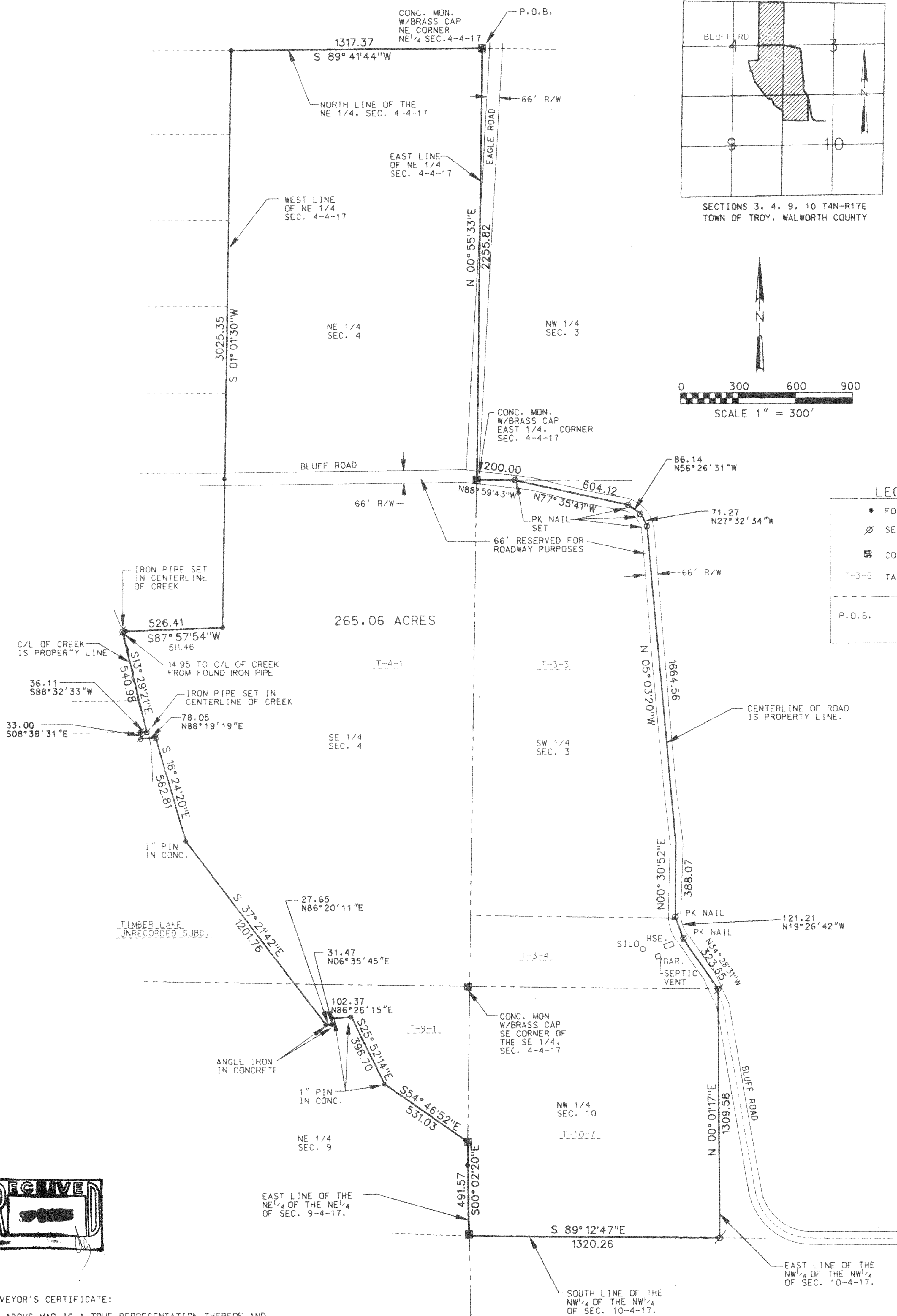


PLAT OF SURVEY

LEGAL DESCRIPTION:

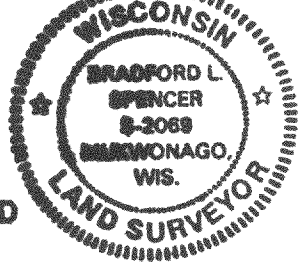
BEING A PARCEL OF LAND LOCATED IN THE NE 1/4 AND SE 1/4 OF THE NE 1/4, THE NE 1/4, NW 1/4, SE 1/4 AND SW 1/4 OF THE SE 1/4 OF SECTION 4, ALSO PART OF THE NE 1/4 OF SECTION 9, ALSO PART OF THE NW 1/4 AND SW 1/4 OF THE NW 1/4 OF SECTION 3 AND THE NW 1/4 OF THE NW 1/4 OF SECTION 10, ALL BEING IN TOWN 4 NORTH, RANGE 17 EAST, TOWN OF TROY, WALWORTH COUNTY, WISCONSIN BEING MORE COMPLETELY DESCRIBED AS FOLLOWS:

COMMENCING AT THE NE CORNER OF THE NE 1/4 OF SAID SECTION 4; THENCE WITH THE NORTH LINE OF SAID NE 1/4 OF SECTION 4 S 89° 41' 44" W, A DISTANCE OF 1317.37' TO A POINT ON THE WEST LINE OF SAID NE 1/4 OF SECTION 4; THENCE WITH SAID WEST LINE S 01° 01' 30" W, A DISTANCE OF 3025.35' TO A POINT; THENCE S 87° 57' 54" W, A DISTANCE OF 526.41' TO A POINT IN THE CREEK; THENCE WITH THE CENTERLINE OF SAID CREEK, S 13° 29' 21" E, A DISTANCE OF 540.98' TO A POINT; THENCE LEAVING SAID CREEK S 88° 32' 33" W, A DISTANCE OF 36.11' TO A POINT; THENCE S 08° 38' 31" E, A DISTANCE OF 33.00' TO A POINT; THENCE N 88° 19' 19" E, A DISTANCE OF 78.05' TO A POINT; THENCE S 16° 24' 20" E, A DISTANCE OF 562.81' TO A POINT; THENCE S 37° 21' 42" E, A DISTANCE OF 1201.76' TO A POINT; THENCE N 86° 20' 11" E, A DISTANCE OF 27.65' TO A POINT; THENCE N 06° 35' 45" E, A DISTANCE OF 31.47' TO A POINT; THENCE N 86° 26' 15" E, A DISTANCE OF 102.37' TO A POINT; THENCE S 25° 52' 14" E, A DISTANCE OF 396.70' TO A POINT; THENCE S 54° 46' 52" E, A DISTANCE OF 531.03' TO A POINT IN THE EAST LINE OF THE NE 1/4 OF SECTION 9; THENCE WITH SAID EAST LINE OF SAID NE 1/4 S 00° 02' 20" E, A DISTANCE OF 491.57' TO A POINT; SAID POINT BEING THE SE CORNER OF THE NE 1/4 OF THE NE 1/4 OF SAID SECTION 9; THENCE WITH THE SOUTH LINE OF THE NW 1/4 OF SECTION 10 S 89° 12' 47" E, A DISTANCE OF 1320.26' TO A POINT IN THE EAST LINE OF THE NW 1/4 OF THE NW 1/4 OF SAID SECTION 10; THENCE WITH SAID EAST LINE N 00° 01' 17" E, A DISTANCE OF 1309.58' TO A POINT ON THE CENTERLINE OF BLUFF ROAD; THENCE WITH SAID CENTERLINE N 34° 28' 31" W, A DISTANCE OF 323.65' TO A POINT; THENCE N 19° 26' 42" W, A DISTANCE OF 121.21' TO A POINT; THENCE N 00° 30' 52" E, A DISTANCE OF 388.07' TO A POINT; THENCE N 05° 03' 20" W, A DISTANCE OF 1664.56' TO A POINT; THENCE N 27° 32' 34" W, A DISTANCE OF 71.27' TO A POINT; THENCE N 56° 26' 31" W, A DISTANCE OF 86.14' TO A POINT; THENCE N 77° 35' 41" W, A DISTANCE OF 604.12' TO A POINT; THENCE N 88° 59' 43" W, A DISTANCE OF 200.00' TO THE EAST 1/4 CORNER OF SECTION 4; THENCE WITH SAID EAST LINE OF THE NE 1/4 OF SAID SECTION 4 N 00° 55' 33" E, A DISTANCE OF 2255.82' TO THE POINT OF BEGINNING. SAID PARCEL CONTAINING 265.06 ACRES MORE OR LESS. THIS PARCEL IS SUBJECT TO THE RIGHTS OF THE PUBLIC TO BLUFF ROAD AND EAGLE ROAD.



SURVEYOR'S CERTIFICATE:
THE ABOVE MAP IS A TRUE REPRESENTATION THEREOF AND SHOWS THE SIZE AND LOCATION OF ALL THE PROPERTY, EXTERIOR BOUNDARIES, THE LOCATION OF ALL VISIBLE BOUNDARY FENCES, APPARENT EASEMENTS, ROADWAYS AND VISIBLE ENCROACHMENTS, IF ANY.
THIS SURVEY IS MADE FOR THE USE OF THE PRESENT OWNERS OF THE PROPERTY, AND ALSO THOSE WHO PURCHASE, MORTGAGE OR GUARANTEE TITLE THERETO WITHIN ONE YEAR FROM THE DATE HERETO.

BRADFORD L. SPENCER, R.L.S. 2069



THIS IS ORIGINAL
PRINT ONLY IF
SEAL IS IMPRINTED
IN RED

RSV ENGINEERING, INC
ENGINEERS, PLANNERS, SURVEYORS
CONSTRUCTION MANAGERS
545 BAY VIEW ROAD, MUKWONAGO, WISCONSIN 53149 (414) 363-2004
RSV# 95026.DGN 6/20/95

417-422